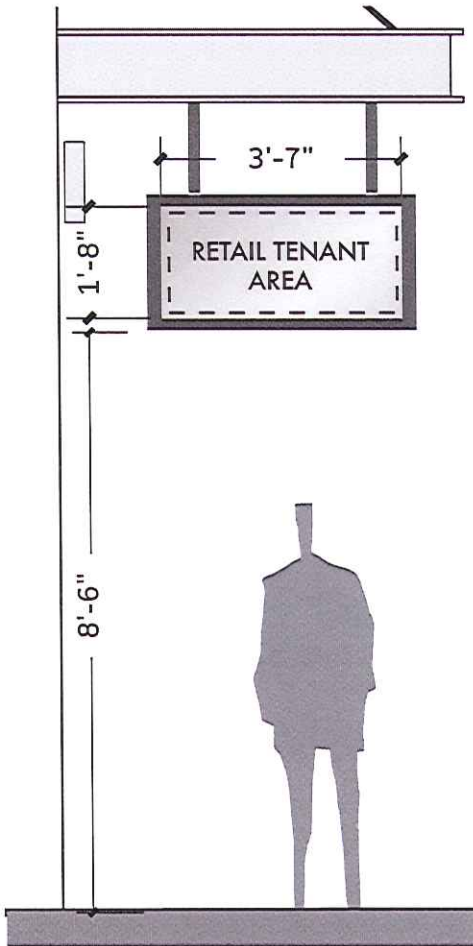
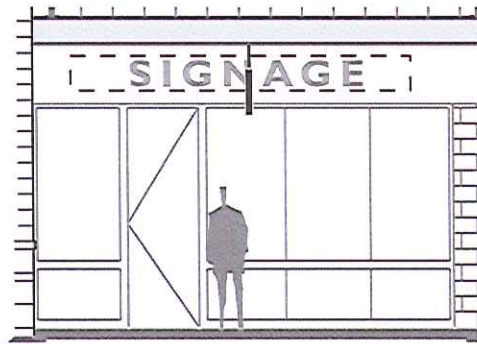


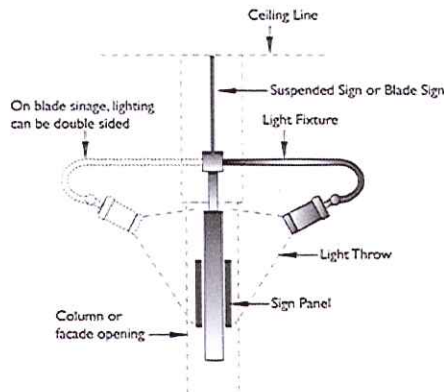
RETAIL SIGNAGE - Blade Signage



Typical Blade Sign Elevation
SCALE • 3/8"=1'-0"



Typical Blade Sign Placement
SCALE • NTS



Example Blade Lighting
SCALE • NTS

SPECIFICATIONS

Pedestrian oriented only signs – All Tenants will be allowed one (1) arcade sign. Tenants with more than one public entry will be allowed a maximum of two (2) arcade signs only if the entries are on different elevations.

Each Tenant will be allowed to use their corporate identity and colors within the designated sign area.

Standard frame and lighting specifications will be provided by the Landlord. Cost of the frame and lighting will be the responsibility of the tenant. Fabrication and installation of all frames and blade signs to be done by a single fabricator specified by the Landlord. All lighting used to be of single style and light out-put, specified by the Landlord.

Bottom of sign—Minimum 8'-0" above finished floor. Orientated perpendicular to storefront.

Maximum square footage shall be 6 s.f. and shall not count against the tenant's aggregate square footage allotment.

Signage may be indirectly or non-illuminated.

COLORS

Structure/Supports: Colorlife CL 3177N *Boundary*

Panel: Brushed aluminum (horizontal finish)

ID Copy: Per tenants corporate standard

