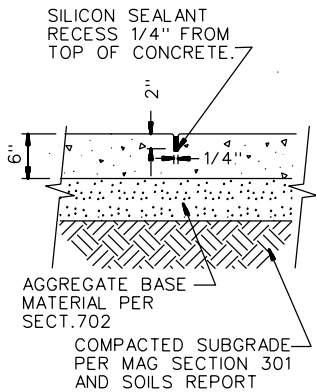
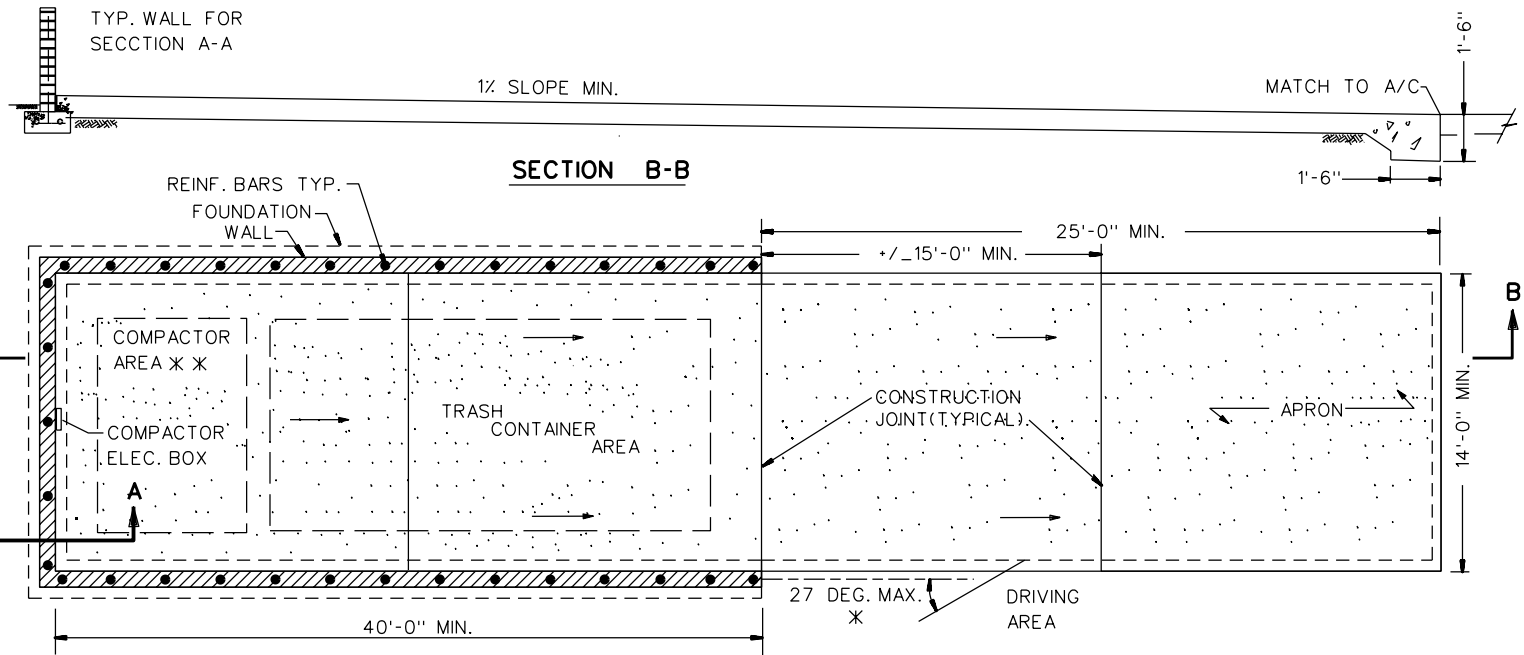


TABLE # 1

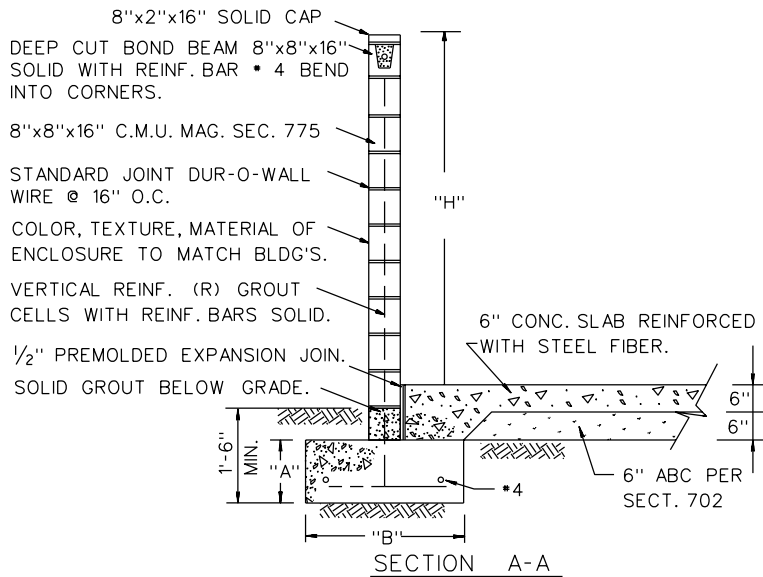
"H"	"A"	"B"	"R"
6'-0"	12"	24"	*4 @ 48"
7'-0"	12"	24"	*5 @ 48"
8'-0"	12"	24"	*5 @ 48"
9'-0"	12"	28"	*6 @ 48"
10'-0"	12"	30"	*6 @ 48"



CONSTRUCTION JOINT



LARGE COMPACTOR ENCLOSURE



NOTES:

- PROPER CLEANING METHODS ARE TO BE USED TO PREVENT THE DISCHARGE OF WASH WATER INTO PUBLIC STORM DRAIN SYSTEM. PLEASE CONTACT THE CITY OF TEMPE ENVIRONMENTAL DIVISION AT 480-350-2678 FOR A LIST OF BEST MANAGEMENT PRACTICES THAT WILL HELP YOUR FACILITY COMPLY WITH ENVIRONMENTAL REGULATIONS.
- THE PROPERTY OWNER SHALL BE RESPONSIBLE FOR THE MAINTENANCE AND REPAIR OF ALL SURFACES, ASPHALT AND CONCRETE, ALONG THE DRIVE PATH OF COLLECTION VEHICLES.
- ** -PROVIDE PEDESTRIAN ACCESS TO THIS AREA (THRU WALL)
- GATES REQUIRE PRIOR APPROVAL BY THE CITY OF TEMPE.
- CONSTRUCT ENCLOSURE PER M.A.G. SECTION 510 AND 725.
- WALL HEIGHT PREDETERMINED BY COMPACTOR HEIGHT (6'-0" MIN.)
- * -FINAL LOCATION & ORIENTATION TO BE DETERMINED BY THE CITY.
- ALL INTERIOR PAD DIMENSIONS ARE MINIMUMS.
- MASONRY $f_m = 1,500$ psi
- REINFORCING $f_y = 60,000$ psi / $f_s = 24,000$ psi
- CONCRETE: $f'_c = 4,000$ psi
- 2" XOREX STEEL FIBER 39.00 LBS/CY